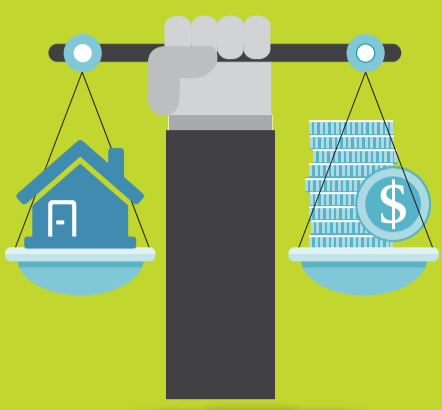


THE 9 THINGS

YOU MUST DO BEFORE YOU INVEST
IN YOUR FIRST PROPERTY CHECKLIST



1. STAY LOGICAL



Set clear financial goals and treat property investment as a business.

2. EDUCATE YOURSELF



Build up a team of trust worthy reliable people to help you. This will mitigate risk, save time, money and energy.

3. RESEARCH

Your aim is to buy the right property, in the right area at the right price. Use the *RPA Investment Property Location Check list* to double check your research.



4. DON'T STRETCH YOURSELF THIN

Take a long term view of your investments and don't over commit yourself too early. Keep to the budget.



6. DON'T BUY EMOTIONALLY

Make sure the performance numbers stack up for the property. Collect capital growth data, rental appraisals & depreciation schedules.

5. CHOOSE THE RIGHT TYPE OF FINANCE TO SUIT YOUR CIRCUMSTANCES

Consider using equity from other properties. Complete a RPA Property Investment Analysis to identify exactly how much out of pocket expense you will have each week that factors all the costs associated with the purchase.

7. SELECT A PROPERTY MANAGER WITH EXPERIENCE, LOCAL KNOWLEDGE, STRONG REPUTATION AND FROM A CREDIBLE COMPANY.



Negotiate terms, communication updates and inspection visits.

8. REVIEW YOUR PORTFOLIO REGULARLY

Check interest rates, depreciation, rent.



9. AIM TO STAY INVESTMENT READY

Track your performance and plan for the next purchase so you are ready to act when the time is right.



WHO IS RESIDENTIAL PROJECTS AUSTRALIA?

For 18 years, RPA has been assisting Australian families to secure a better future via property investment and debt reduction strategies at an affordable entry level.

Our expert property investment specialists are experienced in all aspects of property investment. Our clients come to understand that the ability to become truly financially secure is available to them through RPA.

We are an independent, Australia wide property research and investment firm with a proven track record. We are not builders or developers. Unlike large companies under pressure to offer underperforming properties, we research and select the right property for our clients. We focus on boutique developments and new estates with a high percentage of owner occupiers. Before a property is recommended it must pass the stringent RPA investment criteria. RPA guides and supports its clients through every stage of the property investment journey from the very first step.

***Free 15 minute introduction discovery session:**

If you are considering investing in property and would like to know the best next steps, click here and one of our team will call you to see if we can help.

Disclaimer:
The information featured in this publication is for general information purposes only. It is not intended as financial or investment advice and should not be construed or relied on as such. We recommend you seek advice from a qualified and registered financial or investment advisor. No material contained within this publication should be construed or relied upon as providing recommendations in relation to any financial product. Residential Projects Australia aims to ensure all information is accurate and correct. This publication has been created with intention to provide quality resources and general information to our audience. Residential Projects Australia Pty Ltd, it's partners, its employees cannot be held responsible for any errors.

RPA RESIDENTIAL PROJECTS AUSTRALIA

www.residentialinvestment.com.au